
Seismic Surveying

Reliable Power for Airguns



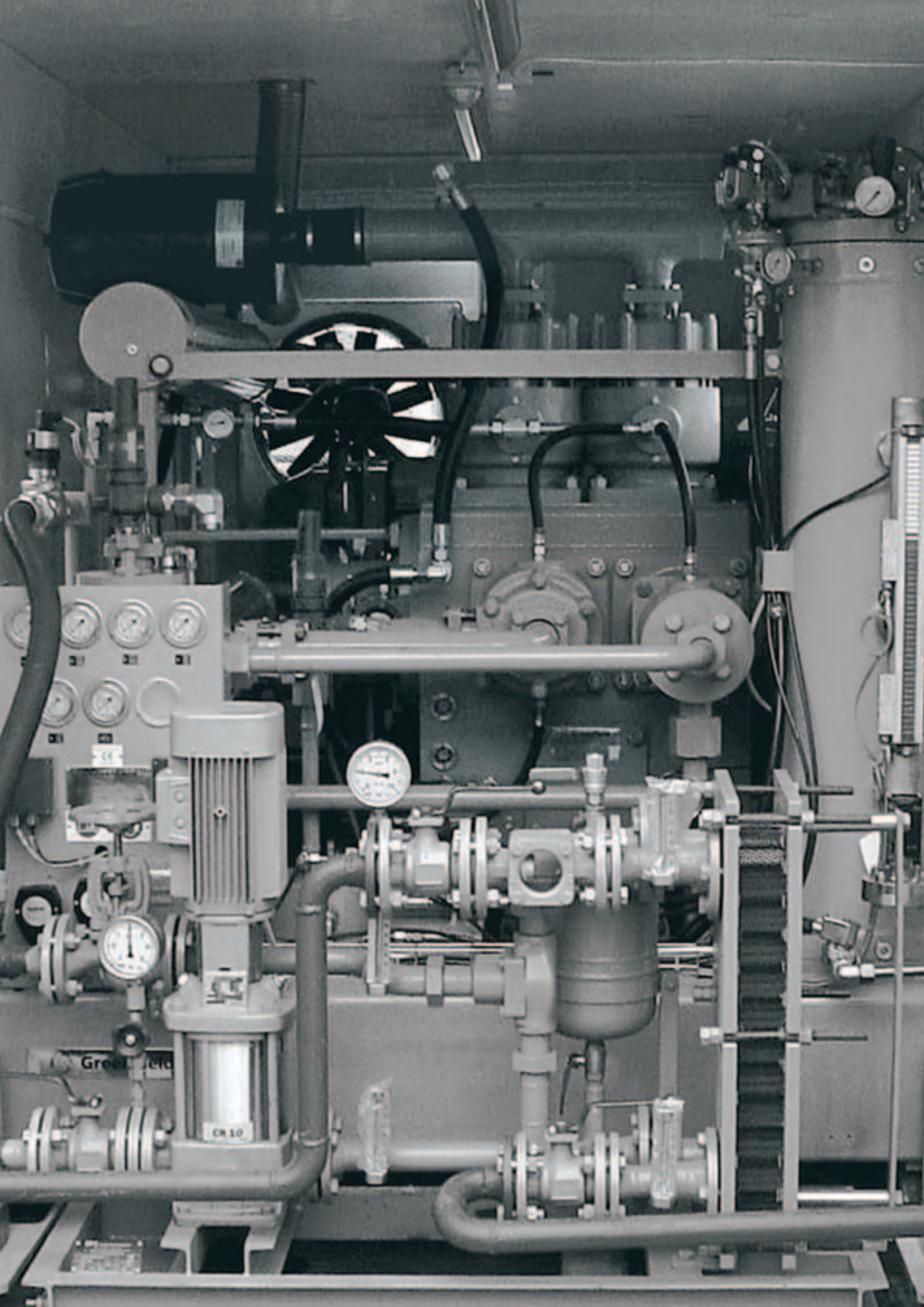
GREENFIELD is your specialist for high-pressure systems. As a pioneer in this business we have been able to maintain and even improve our strong market position providing total solutions – from a single compressor to complete systems.

Today, GREENFIELD is the technology leader worldwide with its high-end premium products engineered in Switzerland.

With a century of experience in high-pressure technology and the fact of thousands of compressors installed worldwide, GREENFIELD is ready to serve your needs for peak performance and success in the market.

As part of the Atlas Copco Group GREENFIELD has global access to over 150 markets, which are served through our production facilities either in Switzerland, Brazil or in the United States.

This comprehensive Sales and Service Network assures our customers direct access to the most reliable and technologically advanced equipment available.



Greiffeld

CR 10

More than 50 GREENFIELD compressors on seismic research vessels worldwide.

Especially for the seismic industry we have developed a compressor system providing the seismic companies with a highly flexible source of high-pressure compressed air as power source for air guns.

During the design of the seismic compressor system, special attention was paid to ensure accurate operation and minimal cost of ownership (energy and maintenance). The seismic compressors are all tested for shipboard use (inclination angle 22.5° witnessed and verified by Lloyd's Register).

Reliable power — your benefits:

- Short delivery time
 - Vibration absorbers supported compressor and flexible connecting piping ensure vibration free operation
 - Spare parts dispatch within 24 hours after order
 - Flexible system with small footprint optimised skid
 - Designed for seismic applications, reliability and little maintenance
 - Sophisticated compressor and Master Control System programmed to customer and seismic application specific needs
 - Highly flexible system with backup units if the complete Free Air Delivery is not needed
 - Global presence
-

Our scope of supply includes compressors for:



Deep water exploration

GREENFIELD offers a combination of screw and reciprocating compressors with high flow capacities. This flexible system delivers any desirable flow needed for the air guns of the world's seismic fleets.

Shallow waters exploration

Our middle range single reciprocating compressors can be used for shallow waters exploration. Electrically driven or diesel driven options are available.



Transition Zone (TZ)

Our easy to transport compressor systems are driven by either an electrical motor or a diesel engine. A containerized version is also available.

Vertical Seismic Profile (VSP)

For offshore and onshore VSP, GREENFIELD offers a variety of high pressure compressors with final pressures of 2200 psig or 3200 psig. Portable, containerized, diesel or electrical versions are available.



Short lead times, high quality products and a reliable service network are our customers benefit.

Design

- Water cooled or
- Air-cooled
- Electro motor or
- Diesel engine driven

The seismic compressor system consists of

- A piston type compressor or
- A screw/piston type compressor combination or
- A compound type compressor

Equipped with

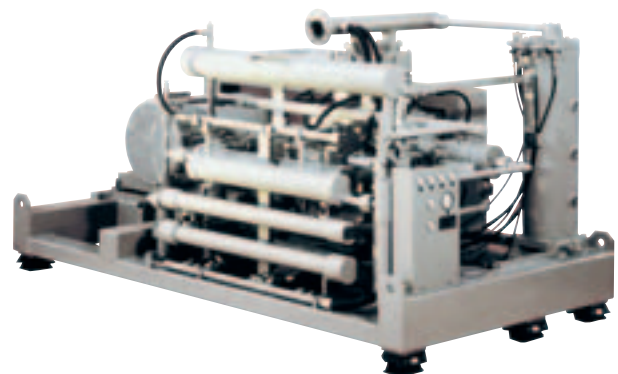
- Closed loop fresh/sea water-cooling
- PLC controlled MCS

Options

- Containers or canopies for on deck installation
- Frequency converter control system
- Transportable units



GA



CU / CT

Technical Specifications

Pressure 2200 psig/150 bar a

Model	Type	Cooling	F.A.D. (scfm)	F.A.D. (m ³ /h)	Speed (rpm)	Drive (kW)	Dimensions (L x W x H mm)	Weight (tons)
C5U 217	piston	air	102	174	900	55	2600 x 1230 x 1430	2.10
C4T 320	piston	air or water	200	340	660	90	4075 x 2500 x 2300	5.00
C4T 320	piston	air or water	309	525	1030	160	4075 x 2500 x 2300	5.40
C3T 211 / GA 90-7	screw/piston	air or water	410	697	1030	132 90	4075 x 2500 x 2300 2950 x 925 x 1650	5.30 2.15
C3T 212.3 / GA 90-7	screw/piston	air or water	508	863	920	160 90	4075 x 2500 x 2300 2950 x 925 x 1650	5.40 2.15
C3T 210.3 / GA 160-13	screw/piston	water	603	1025	970	152 160	4075 x 2500 x 2300 2950 x 925 x 1650	5.30 2.57
C3T 212.3 / GA 200-13	screw/piston	water	709	1205	680	160 200	4075 x 2500 x 2300 3300 x 1310 x 1976	5.40 4.40
C3T 212.3 / GA 200-13	screw/piston	water	880	1496	850	200 200	4075 x 2500 x 2300 3300 x 1310 x 1976	5.60 4.40
C3T 210.14 / ORV	compound	air or water	990	1682	1000	410	6100 x 2290 x 2190	12.00

Pressure 3200 psig/220 bar a

Model	Type	Cooling	F.A.D. (scfm)	F.A.D. (m ³ /h)	Speed (rpm)	Drive (kW)	Dimensions (L x W x H mm)	Weight (tons)
C5U 217	piston	air	103	176	915	55	2600 x 1230 x 1430	2.10
C5T 223	piston	air or water	204	347	770	110	4075 x 2500 x 2300	5.10
C4T 116 / GA 90-7	screw/piston	air or water	308	524	680	110 90	4075 x 2500 x 2300 2950 x 925 x 1650	5.10 2.15
C4T 116 / GA 90-7	screw/piston	air or water	406	690	900	132 90	4075 x 2500 x 2300 2950 x 925 x 1650	5.30 2.15
C3T 212 / GA 90-7	screw/piston	air or water	500	850	940	200 90	4075 x 2500 x 2300 2950 x 925 x 1650	5.60 2.15
C3T 210.1 / GA 160-13	screw/piston	water	607	1032	880	160 160	4075 x 2500 x 2300 3300 x 1310 x 1976	5.40 4.40
C3T 210.1 / GA 200-13	screw/piston	water	716	1217	1045	200 200	4075 x 2500 x 2300 3300 x 1310 x 1976	5.60 4.40
C3T 210.8 / ORV	compound	air or water	905	1538	980	410	6100 x 2290 x 2190	12.00

Dimensions and weights are approximate figures for the complete compressor system, without control cabinet.
 Technical data subject to modification.



Atlas Copco

GREENFIELD AG
Güterstrasse 107
P.O. Box 1405
CH-4133 Pratteln
Switzerland
www.greenfield-comp.com

Part of the Atlas Copco Group

